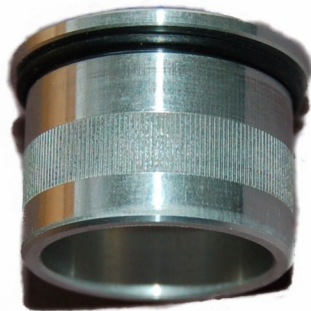




New Product Information

CHRYSLER CASE BUSHING **for the Harness Connector**

Allows a late model case to be used as an early model case.



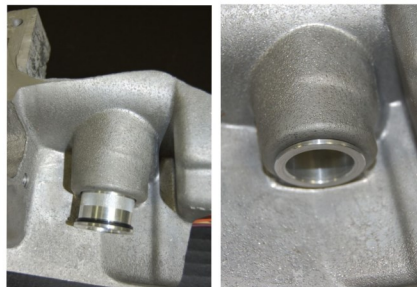
Part #T22916S

The older 518/618 cases are getting hard to find. So when your sprag breaks or other problems with the case arise, it is time consuming and expensive to find an original replacement case. Previously, you could not use a late model case, like the 47RE, because the hole for the electronics into the case is much larger. TeckPak's case bushing for the harness connector allows a late case to be used in the early application. This saves you time and money.

NOTE: The 47RE must have a screw in neutral safety switch in order to be used.



Chrysler 46/47/48RE (late model)



T22916S installed into late model case



Chrysler 46/47RH (early model)

REQUEST THE BEST... ASK FOR GENUINE TECKPAK-FITZALL
1-800-527-2544 **www.teckpak-fitzall.com**